

# RS400 Rollover Sensor

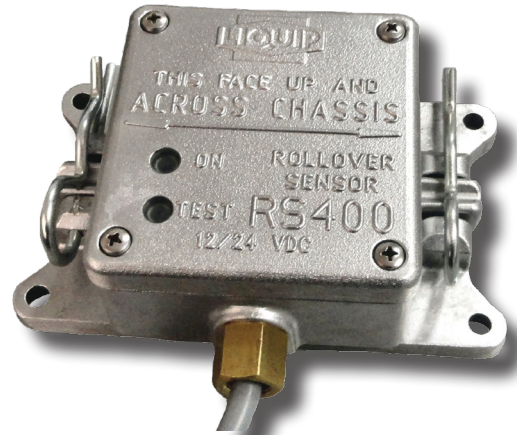
The RS400 is the fourth generation of Liquip Rollover Sensor and symbolises Liquip’s constant drive for safety and continuous improvement.

Rollovers can occur in the blink of an eye. By installing the RS400 Rollover Sensor the severity of an incident will be significantly reduced, should a rollover occur.

In the event of a rollover, the RS400 is a safe and effective way to ensure electrical sources of product ignition are isolated. This helps to reduce potential driver injury and impacts to the public and the environment.

## Key Features

- Complies with AS2809 - Vehicle Rollover Device.
- Solid state 3 axis accelerometer determines when a rollover has occurred and activates the battery isolation switch to shutdown power sources.
- The device will not be activated at less than 45° to the vertical.
- Inbuilt filter prevents accidental shutdowns by rejecting any readings that would not result in a rollover e.g. bumps.
- Same footprint as previous models for ease of replacement and/or installation.
- Resistant to power surges.
- If the sensor loses power, it won’t actuate the emergency mains switch.
- Integrated hinge and indicator lights for easy in situ testing.
- 2 metres of colour coded cable for ease of installation.
- Power input is reverse polarity protected and solid state outputs are fault current limited to protect against incorrect installation.
- Can also be used to operate a Liquip engine strangler to ensure the vehicle engine stops.



*The RS400 installed position*



*The RS400 allows for easy testing*

## Design Codes

Designed and manufactured to be compatible with all trucks.

## Specifications

<b>Operating voltage range</b>	9V to 32V DC, 1.5W maximum
<b>Operating temperature range</b>	-20°C to +60°C
<b>Ingress Protection Rating</b>	IP65 rated
<b>Standards</b>	Meets AS2809-2008
<b>Weight</b>	2.2 kg
<b>Warranty</b>	12 months on manufacturing faults
<b>Contact current rating</b>	10A DC switching current (NOHP to 0V) 0.15A DC switching current (NO/NC to COM)
<b>Mounting/Installation</b>	Installation instructions supplied



## Dismantle

Not user serviceable.

## Adjustment or Service

Sensor testing is recommended when standard maintenance is carried out on the tanker (typically every three months).

A hinging base is provided to allow simple testing of the sensor. With the vehicle in park and handbrake applied, remove one of the humpback pins from the RS400 and tilt the sensor body until it reaches the stop. At this point electrical circuits will have no voltage and truck engine will stop (if engine strangler fitted). After testing replace the sensor and secure it with the humpback pin.

A unique "self diagnosis" tool indicates rollover sensor functionality. A steady bright green LED indicates the rollover sensor is horizontal and functional. A steady bright red LED indicates the rollover sensor is tilted past its activation angle. During in situ testing red LED will turn off once power has been isolated.

If the RS400 is powered and it is observed that both red and green LED are off at the same time, or if either LED is flashing, then the RS400 should be replaced.

It is recommended that the 4 screws holding the lid are periodically checked that they are tightened to 2Nm each. Retightening is necessary due to compression set in the gasket.

## Materials of Construction

- Base, body and lid are cast aluminium.
- Humpback pins are zinc plated steel.
- All electronic components are encased in epoxy.
- Lenses are acrylic.

## Cable Signal Description

CABLE COLOUR	SIGNAL NAME	SIGNAL DESCRIPTION
RED	V+	POSITIVE POWER INPUT
GREEN/YELLOW	0V	NEGATIVE POWER INPUT
BLACK	0V	NEGATIVE HIGH POWER INPUT
BROWN	NOHP	POSITIVE HIGH POWER INPUT
WHITE	NO	NORMALLY OPEN LOW POWER CONTACT
GREY	COM	COMMON LOW POWER CONTACT
BLUE	NC	NORMALLY CLOSED LOW POWER CONTACT
VIOLET	TX	RS232 TRANSMIT
PINK	RX	RS232 RECEIVE

## Associated Documentation

Installation instructions P59097. Wiring must be in accordance with AS2809.

## Associated Equipment

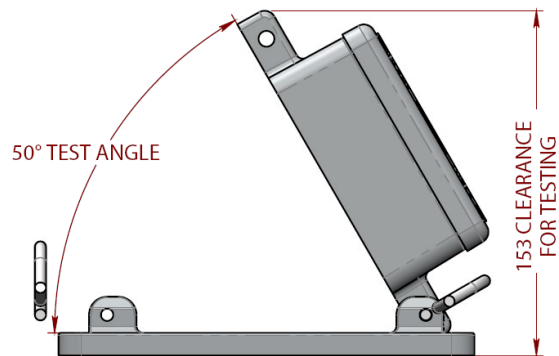
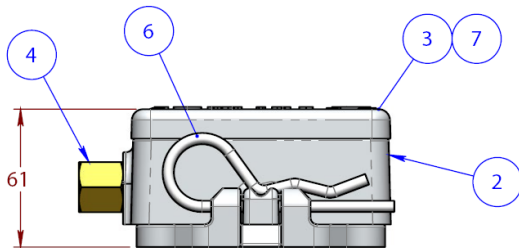
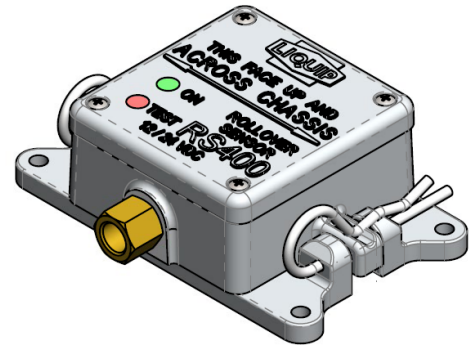
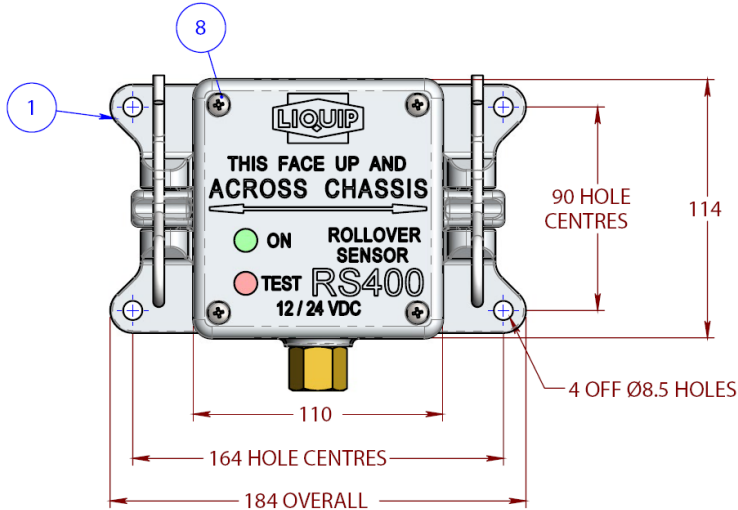
- **MES3:** 3" Mechanical Engine Strangler.
- **MES5:** 5" Mechanical Engine Strangler.
- **TSW12K:** Manual 500amp Isolation Switch 12V.
- **TSW24K:** Manual 500amp Isolation Switch 24V.
- **HRN1.5X2RW:** Harness Kit TSW12/24 Isolation Switches.

*Overall dimensions shown on the drawing overleaf.*



# LIQUIP

## RS400 ROLLOVER SENSOR



ITEM NO.	PART NUMBER	DESCRIPTION	QTY	MATERIAL
1	RS201-1	BASE - HINGING	1	ALUMINIUM
2	RS400-2	BODY ROLLOVER SENSOR	1	ALUMINIUM
3	RS400-3	LID	1	ALUMINIUM
4	ERP200-3	ADAPTOR	1	BRASS
5	RS400-4	GROMMET	1	VITON
6	0880	HUMPBACK PIN	2	Z/P STEEL
7	4249	GASKET	1	NBR CORK
8	55069	SCREW METRIC	4	ST STEEL
9	59097	RS400 INSTALLATION INSTRUCTION	1	PAPER

X1051312

Issue: B

METERS - VALVES - VENTS - MANHOLES - PUMPS - HOSEREELS - OVERFILL PROTECTION - LOADING ARMS - ELECTRONIC DIPSTICKS



LIQUIP INTERNATIONAL PTY LTD  
 P.O. Box 7049  
 Wetherill Park BC, 2164  
 Sydney NSW Australia  
 Phone: +612 9725 9000  
 Fax: +612 9725 1252

DISTRIBUTORS  
 See website for  
 Liquip branches  
 and Distributors

[www.liquip.com](http://www.liquip.com)