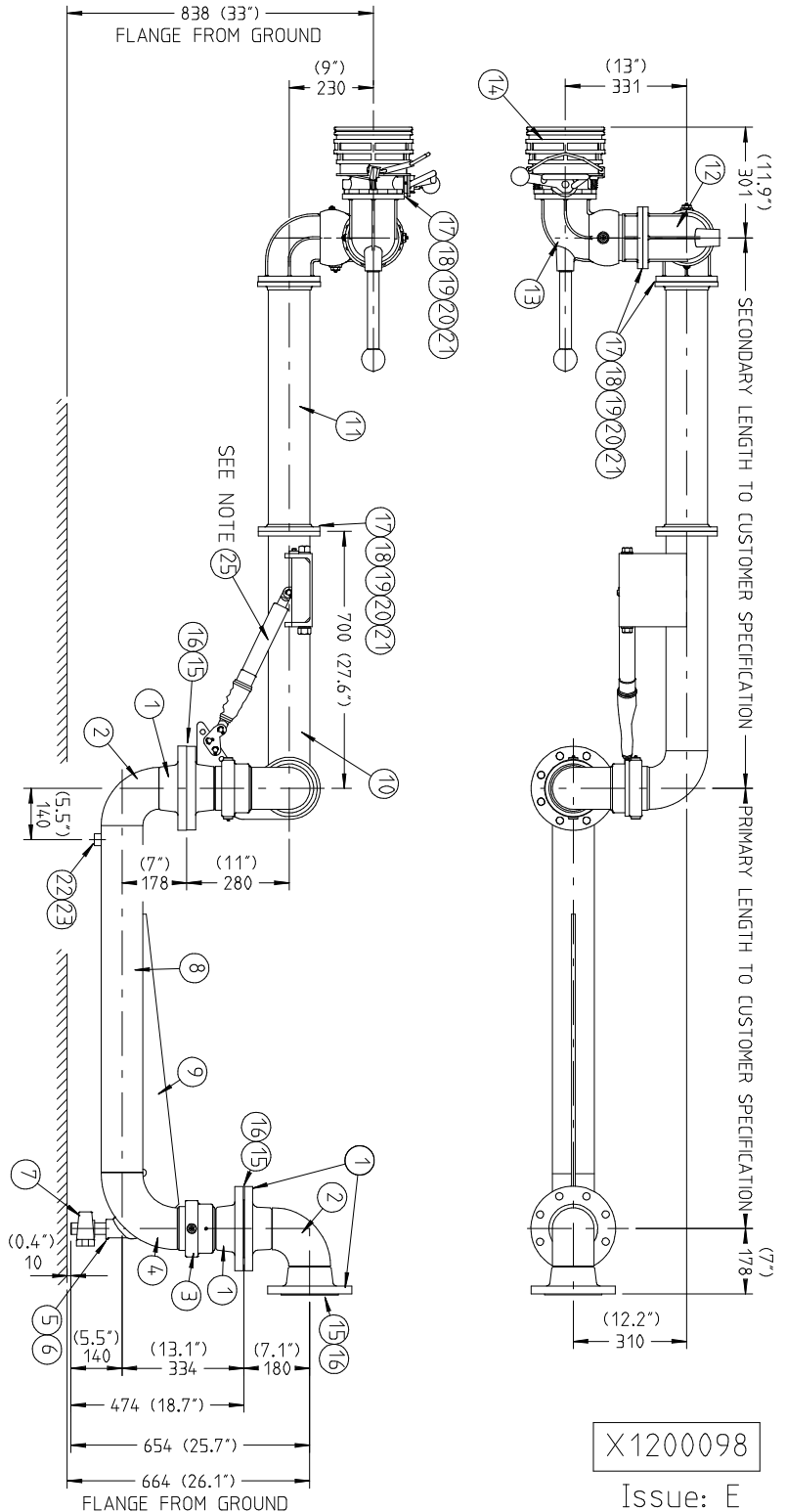


# LIQUIP

## MK3 UNLOADING ARM

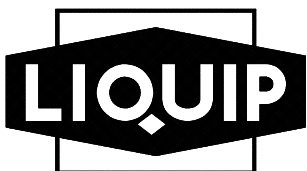
ITEM	PART NO	DESCRIPTION	QTY	MATERIAL
1	5767	FLANGE 4" ANSI 150 RF	4	STEEL
2	0738	ELBOW BUTTWELD 4" SHORT RADIUS	2	STEEL
3	3JW100MMV	SWIVEL 100mm WELD-ON	1	STEEL
4	1080	ELBOW BUTTWELD 4" LONG RADIUS	1	STEEL
5	LTD075-4	PIPET FOR SHAFT	1	STEEL
6	LTD4-13S	SHAFT	1	ST. STEEL
7	4579Z	BEARING AND BEARING BLOCK KIT	1	STEEL
8	70513	PIPE 100NB STANDARD SEAMLESS	1	STEEL
9	FABRICATED	GUSSET	1	MILD STEEL
10	VBB100MMVG	BALANCE ASSEMBLY MK3 BOTTOM LOAD STYLE	1	STEEL
11	L219A	HORIZONTAL SPOOL ø100mm C/W TTMA FLANGES	1	ALUMINIUM
12	VNI-44	INTERMEDIATE SWIVEL	1	ALUMINIUM
13	VNC-44	COUPLER SWIVEL C/W BALL HANDLE	1	ALUMINIUM
14	AP1710	DRY-BREAK COUPLER	1	ALUMINIUM
15	4235	GASKET 4" ANSI 150	3	KLINGEBRTE
16	4892	STUD B7 C/W 2 x NUTS. 2H	24	STEEL
17	4248	GASKET 4" TTMA	4	KLINGEBRTE
18	6745	BOLT	32	Z/P STEEL
19	6744	NUT	32	Z/P STEEL
20	5261	WASHER SPRING	32	Z/P STEEL
21	5288	WASHER FLAT	32	Z/P STEEL
22	0677	SOCKET 3/4" BSP	64	Z/P STEEL
23	0615	PLUG 3/4" BSP	1	MILD STEEL
24	6359	VIA INSTALLATION INSTRUCTIONS	1	PAPER
25		LIFT-O-MAT STRUT (SEE NOTE)	1	STEEL

RIGHT HAND VERSION SHOWN



NOTE:  
 ALL LOADING ARMS ARE INDIVIDUALLY DESIGNED  
 LIFT-O-MAT STRUT STRENGTH DEPENDS ON ARM LENGTH,  
 MATERIAL AND CONTENTS eg LIQUID OR VAPOUR  
 EACH JOB MUST SPECIFY THE STRUT TO BE USED

METERS - VALVES - VENTS - MANHOLES - PUMPS - HOSEREELS - OVERFILL PROTECTION - LOADING ARMS - ELECTRONIC DIPSTICKS



LIQUIP INTERNATIONAL PTY LTD

PO Box 7049  
 Wetherill Park BC, 2164  
 Sydney NSW Australia  
 Phone: +612 9725 9000  
 Fax: +612 9725 1252

DISTRIBUTORS

See website  
 for Liquip branches  
 and Distributors

www.liquip.com